



UYGAR[®]
ELEVATOR



**MODULAR
Cabin & Sling System**

UYGAR[®]
since
**19
76**







Company Profile

Production

Our company, which has the power to produce in synchronization with high technology benches and robots with 3D modeling management, is one of the few factories in Turkey. Our factory and business; It offers and produces Package Elevator Systems to our valued customers with its wide product range, elevator visual accessories and designs.

Our basic productions are; to be used in shopping malls, subways, high-rise buildings and public buildings as well as villa elevators; they are Automatic Landing and Cabin Doors, Cabin, Frame and Button systems that are branded in Turkey in the form of mass production. They are designed not only for new assemblies but also for use in modernization projects.

International Standards and Certificates

In addition to being able to provide service in almost any application, our product range includes special designs and coatings in accordance with international standards, apart from standardized equipment. Our products have the necessary certificates.

Safety and Reliability

Elevator facilities should have higher safety and reliability than other machine systems in terms of human life and property safety. UYGAR ELEVATOR IND. and TIC. LTD. As STI; we are a dynamic company that works to select elevators suitable for needs and purposes, to create elevator configurations, to manufacture them with sufficient safety and durability, to follow world standards in a disciplined, meticulous working environment with deep-rooted knowledge, and to constantly improve itself.

Vision

Our vision; to be the most preferred world brand that follows technology, changes and innovations in the global market and also gives importance to originality.

Our Mission

To provide superior service in the most reliable and efficient way before, during and after sales, in line with the expectations and needs of customers in the elevator industry. To increase our market share by maintaining our reliability in the sector, to ensure customer satisfaction and loyalty, to provide continuous improvement by adding value to employees and society.

Motto

Our motto is "Trust in Motion": our aim is to become attractive to our customers by offering the highest level of service and the highest quality. We want to perfect the highest level of products and perfect services not only as independent companies, but strengthened by our group spirit, we want to be perfect worldwide.

In our pursuit of excellence, we focused on four strategic topics:

- Leadership and Values
- Customer Benefits
- Superior Performance
- Innovative Solutions

As the UYGAR GROUP, we are constantly striving to be better and consider the critical feedback from our customers.

Our company, which does not compromise on quality and constantly works for the best, is proud to produce the elevators that our country needs and to serve our valued customers.



Company History

1976: UYGAR has been entered to the elevator sector by production of copy system of pit and retiring cams. During 1976–1996, the firm has been the leading companies in the domestic market of the elevator sector.

1996: Because of increasing demands in the elevator sector, Uygur Elevator was established.

2006: Added to the structure of the showroom building for selling hydraulic elevator, electric package elevator and for exposing the new products.

2008: Manufacturing automation system was launched and thus, production began to be more corporate environment. Firstly, the production of cars and automatic door was began. We succeed producing completely modular cabin system without source material. We have minimized the error by testing in wellhole and three-dimensional digital environment. We ensure the success in automatic door production, frame and panels. After, we produced the landing mechanism. We have produced the buttons with CNC Benchs and received support from abroad for keeping up to date the electronic development. We offer to our costumers as a package elevator by synchronizing the car-automatic door and button system.

2012: With adding the new showroom to our scope, R&D workings have been initiated on machine roomless elevator systems (MRL SYSTEM). On R&D workings, 1:1 and 2:1 systems implemented a single sling aiming to speed up the production process and shorten the expediting time.

2013: With R&D workings on machine roomless elevators system, aiming to minimum pit dimensions, minimum overhead height and minimum downhole dimensions and therefore decreased the using of hydraulic elevators. When we are making R&D workings, the exporting of package elevator systems and modernization of package elevator are accelerated and gained importance at abroad and especially in European Countries.

2014: With R&D workings; Machine Roomless Elevator was combined with H System Belt Technology and therefore world standards and technology have been followed. H System Belt Technology Machine Roomless Elevator offers to our valuable customers; comfort, flexibility, reliability, lower costs, minimum dimensions, quick installation, smooth and quiet performance and various elevator designs. Following the world standards and technology, attention was given to the Panoramic Car Designs and Full Glass Framed Panels designed for landing doors/car doors.

2015: By R&D workings, L System Belt Technology Machine Roomless Elevator is offered to our valuable customers. This new system is designed for using in the villa (homelift). 90% of the factory construction was completed and is planned to be expansion of production space.

2016: The construction of the new factory has been completed, and the production power and capacity have been maximized with the advanced machine and robot technology invested in. Thus, following world standards; our products; started to be produced with fast, serial, economical and superior technology.

2017: The requirements of EN 81-20/50 standards have been completed on our products and the necessary certificates have been obtained. In order to increase customer satisfaction at every stage of sales and production, the ERP and MRP automation system was switched to maximize traceability. Thus, industry 4.0 infrastructure preparations began. In order to provide better service to our customers, adaptation to ISO 9001:2015 Quality Management System has been achieved. Our investments continue in order to follow the latest production technologies in our new factory area.

2018: Exports to the Russia region have increased; All necessary studies were carried out to enter the Russian market and the necessary EAC certificates were obtained. In addition, EI60 Fire Resistance Tests have started for elevator automatic doors.

2022: Our market network has been expanded by giving distributorship to various countries in Europe. Diversity has been increased in elevator doors as 2 panels, 3 panels, 4 panels telescopic and center. Elevator doors have successfully passed the EI120 and EW60 tests. MRL-H, MRL-L, MRL-C types were produced in belt system elevators.

2023: R&D studies are continuing for high-speed elevators...



Technological Solutions

From Customer Requirements to
Modernization
Security to Ease of Access

Index

PAGE	DESCRIPTION
9	Rated Load Table
12	Base Model
13	Global Models
19	Ultra Models (Laminated Glass)
36	Panoramic Models
38	Goods and Hospital Cabin Models
41	Cabin Panel Options
46	Cabin Ceiling Options
48	Cabin Floor Options
49	Cabin Handrail Options
50	LOP and COP Options
56	Sling Systems
64	Certificates



INNOVATOR

Rated Load Table

Rated Load	Number of Person	Minimum Available Car Area	Maximum Available Car Area
kg		m2	m2
225	3	0,6	0,7
300	4	0,79	0,9
375	5	0,98	1,1
400	5	1,05	1,17
450	6	1,17	1,3
525	7	1,31	1,45
600	8	1,45	1,6
630	8	1,51	1,66
675	9	1,59	1,75
750	10	1,73	1,9
800	10	1,82	2
825	11	1,87	2,05
900	12	2,01	2,2
975	13	2,15	2,35
1000	13	2,2	2,4
1050	14	2,29	2,5
1125	15	2,43	2,65
1200	16	2,57	2,8
1275	17	2,71	2,95
1350	18	2,85	3,1
1425	19	2,99	3,35
1500	20	3,13	3,4
1600	22	3,36	3,56
2000	26	3,98	4,2
2500	34	4,74	5





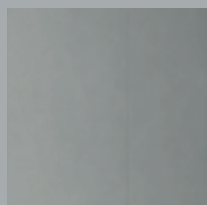
CABIN

Base Model



12

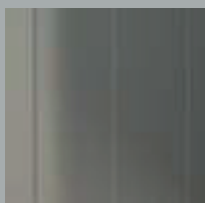
Floor	Granite / Bianco Sardo
Wall Panels	Electrostatic Powder Paint / RAL 7035
Entrance Sides	Electrostatic Powder Paint / RAL 7035
Mirror Panels	Stainless Steel / Satine
Mirror	Float Mirror / Standard
Ceiling	RAL 7035
Lightning	LED (Standart Model)
Handrail	Staine Stainless Steel
Kickplate	Stainless Steel / Mirror
COP	Car Operation Panel not included.



Global Model



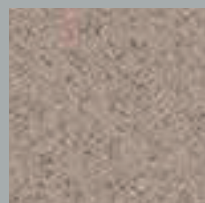
Floor	Granite / Bianco Sardo
Wall Panels	Stainless Steel / Satine
Entrance Sides	Stainless Steel / Satine
Mirror Panels	Stainless Steel / Satine
Mirror	Float Mirror / Standard
Ceiling	Stainless Steel / Mirror
Lightning	LED (Standart Model)
Handrail	Staine Stainless Steel
Kickplate	Stainless Steel / Mirror
COP	Car Operation Panel not included.



Deco Bronze Model



Floor	Granite Bianco Sardo
Wall Panels	Stainless Steel / Satine Bronze
Entrance Sides	Stainless Steel / Satine Bronze
Mirror Panels	Stainless Steel / Satine Bronze
Mirror	Float Mirror / Standard
Ceiling	Stainless Steel / Mirror
Lightning	LED
Handrail	Staine Stainless Steel
Kickplate	Stainless Steel / Mirror
COP	Car Operation Panel not included.



Deco Gold Model



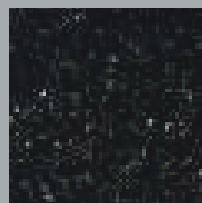
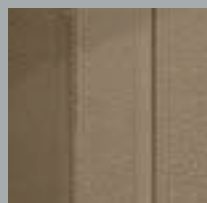
Floor	Granite / Bianco Sardo
Wall Panels	Stainless Steel / Satine Gold
Entrance Sides	Stainless Steel / Satine Gold
Mirror Panels	Stainless Steel / Satine Gold
Mirror	Flotal Mirror / Standard
Ceiling	Stainless Steel / Mirror
Lightning	LED
Handrail	Staine Stainless Steel
Kickplate	Stainless Steel / Mirror
COP	Car Operation Panel not included.



Deco Modern Bronze



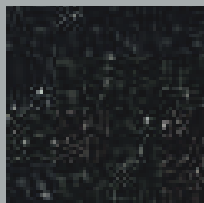
Floor	Granite / Star Galaxy
Wall Panels	Stainless Steel / Decorative SG 220 Bronze
Entrance Sides	Stainless Steel / Decorative SG 220 Bronze
Mirror Panels	Stainless Steel / Bronze Mirror
Mirror	Flotal Mirror / Standard
Ceiling	Stainless Steel / Mirror
Lightning	LED
Handrail	Satine Stainless / Satine Bronze
Kickplate	Satine Stainless / Bronze Mirror
COP	Car Operation Panel not included.



Deco Modern Gold



Floor	Granite / Star Galaxy
Wall Panels	Stainless Steel / Decorative SG 220 Gold
Entrance Sides	Stainless Steel / Decorative SG 220 Gold
Mirror Panels	Stainless Steel / Gold Mirror
Mirror	Flotal Mirror / Standard
Ceiling	Stainless Steel / Mirror
Lightning	LED
Handrail	Satine Stainless / Satine Gold
Kickplate	Satine Stainless / Gold Mirror
COP	Car Operation Panel not included.

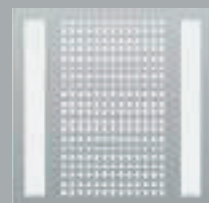
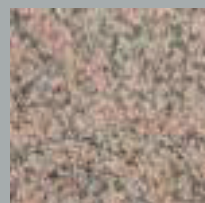


Deco Basic Model

18



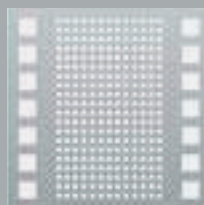
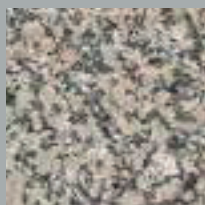
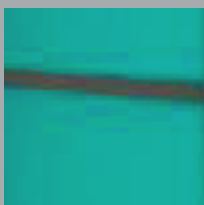
Floor	Granite / Rosa Porino
Wall Panels	Stainless Steel / SM 115
Entrance Sides	Stainless Steel / Satine
Mirror Panels	Stainless Steel / Satine
Mirror	Flotal Mirror / Standard
Ceiling	Stainless Steel / Mirror
Lightning	LED
Handrail	Staine Stainless Steel
Kickplate	Stainless Steel / Mirror
COP	Car Operation Panel not included.



Ultra Glass Blue



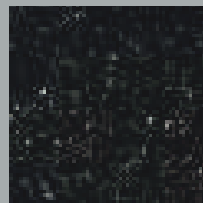
Floor	Granite / Bianco Sardo
Wall Panels	Laminated Glass RAL 5010
Entrance Sides	Laminated Glass RAL 5010
Mirror Panels	Stainless Steel / Satine
Mirror	Flotal Mirror / Standard
Ceiling	Stainless Steel / Mirror
Lightning	LED
Handrail	Staine Stainless Steel
Kickplate	Stainless Steel / Mirror
COP	Car Operation Panel not included.



Ultra Elegance Model



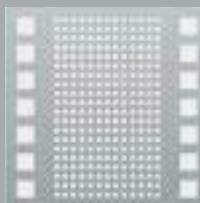
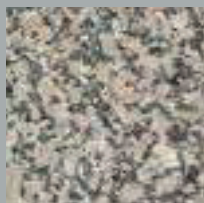
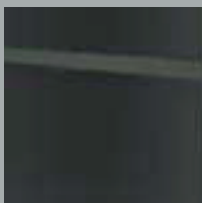
Floor	Granite / Star Galaxy
Wall Panels	Travertine / Satine Gold Mirror
Entrance Sides	Stainless Steel / Gold
Mirror Panels	Stainless Steel / Gold Mirror
Mirror	Stainless Steel / Gold
Ceiling	Stainless Steel / Mirror
Lightning	LED
Handrail	Staine Stainless Steel
Kickplate	Stainless Steel / Mirror
COP	Car Operation Panel not included.



Ultra Glass Black



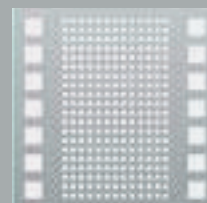
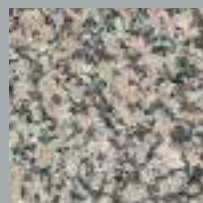
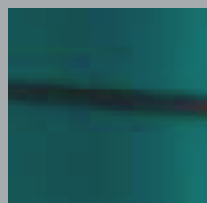
Floor	Granite / Bianco Sardo
Wall Panels	Laminated Glass RAL 7016
Entrance Sides	Laminated Glass RAL 7016
Mirror Panels	Stainless Steel / Satine
Mirror	Float Mirror / Standard
Ceiling	Stainless Steel / Mirror
Lightning	LED
Handrail	Staine Stainless Steel
Kickplate	Satine Stainless / Mirror
COP	Car Operation Panel not included.



Ultra Deep Blue



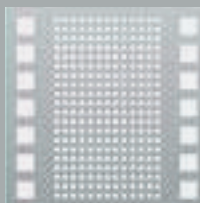
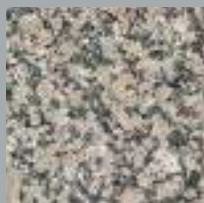
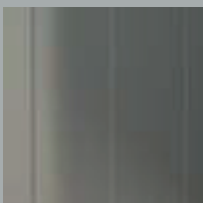
Floor	Granite / Bianco Sardo
Wall Panels	Laminated Glass RAL 5010
Entrance Sides	Laminated Glass RAL 5010
Mirror Panels	Stainless Steel / Satine
Mirror	Float Mirror / Standard
Ceiling	Stainless Steel / Mirror
Lightning	LED
Handrail	Staine Stainless Steel
Kickplate	Stainless Steel / Mirror
COP	Car Operation Panel not included.



Ultra White



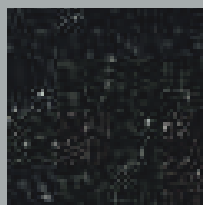
Floor	Granite / Bianco Sardo
Wall Panels	Laminated Glass RAL 9010
Entrance Sides	Laminated Glass RAL 9010
Mirror Panels	Stainless Steel / Satine
Mirror	Float Mirror / Standard
Ceiling	Stainless Steel / Mirror
Lightning	LED
Handrail	Staine Stainless Steel
Kickplate	Stainless Steel / Mirror
COP	Car Operation Panel not included.



Ultra Glass Red



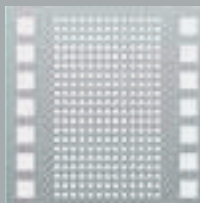
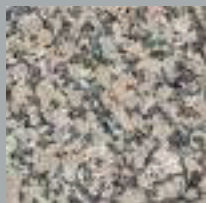
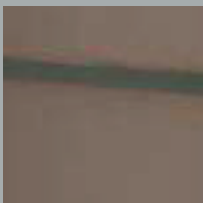
Floor	PVC / Spect Black
Wall Panels	Laminated Glass RAL 3002
Entrance Sides	Laminated Glass RAL 3002
Mirror Panels	Stainless Steel / Satine
Mirror	Flotal Mirror / Standard
Ceiling	Stainless Steel / Mirror
Lightning	LED
Handrail	Staine Stainless Steel
Kickplate	Stainless Steel / Mirror
COP	Car Operation Panel not included.



Ultra Glass Brown



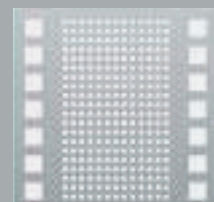
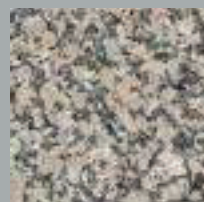
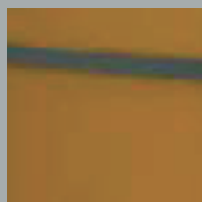
Floor	Granite / Bianco Sardo
Wall Panels	Laminated Glass RAL 8025
Entrance Sides	Laminated Glass RAL 8025
Mirror Panels	Stainless Steel / Satine
Mirror	Flotal Mirror / Standard
Ceiling	Stainless Steel / Mirror
Lightning	LED
Handrail	Staine Stainless Steel
Kickplate	Stainless Steel / Mirror
COP	Car Operation Panel not included.



Ultra Glass Orange



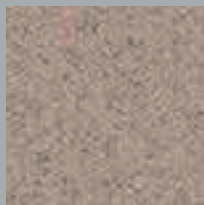
Floor	Granite / Bianco Sardo
Wall Panels	Laminated Glass RAL 3022
Entrance Sides	Laminated Glass RAL 3022
Mirror Panels	Stainless Steel / Satine
Mirror	Flotal Mirror / Standard
Ceiling	Stainless Steel / Mirror
Lightning	LED
Handrail	Staine Stainless Steel
Kickplate	Stainless Steel / Mirror
COP	Car Operation Panel not included.



Ultra 3D - 01



Floor	Granite / Star Galaxy
Wall Panels	Stainless Steel / Satine
Entrance Sides	Stainless Steel / Satine
Mirror Panels	Stainless Steel / Satine
Mirror	Flotal Mirror / Standard
Ceiling	Stainless Steel / Mirror
Lightning	LED
Handrail	Stainless Steel / Mirror
Kickplate	Stainless Steel
COP	Car Operation Panel not included.

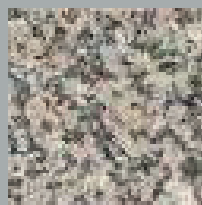


Ultra 3D - 02

28



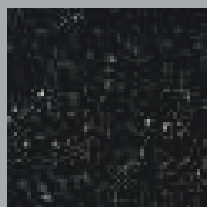
Floor	Granite / Bianco Sardo
Wall Panels	Laminated Glass
Entrance Sides	Stainless Steel / Mirror
Mirror Panels	Stainless Steel / Mirror
Mirror	Flotal Mirror / Standard
Ceiling	Stainless Steel / Mirror
Lightning	LED
Handrail	Stainless Steel / Mirror
Kickplate	Stainless Steel / Mirror
COP	Car Operation Panel not included.



Ultra 3D – 03



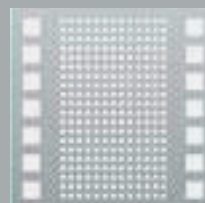
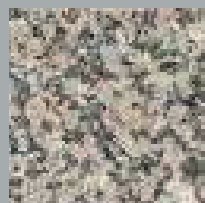
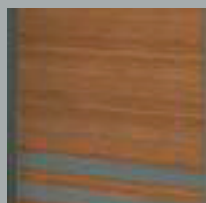
Floor	Laminated Glass
Wall Panels	Laminated Glass
Entrance Sides	Stainless Steel / Satine
Mirror Panels	Stainless Steel / Satine
Mirror	Flotal Mirror / Standard
Ceiling	Stainless Steel / Mirror
Lightning	LED
Handrail	Staine Stainless Steel
Kickplate	Stainless Steel / Mirror
COP	Car Operation Panel not included.



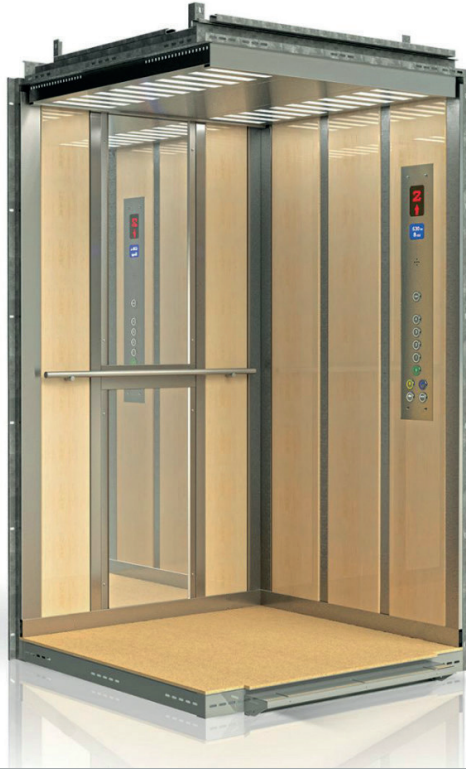
Ultra Wood 01



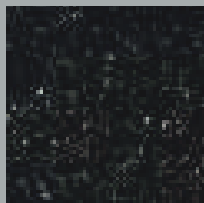
Floor	Granite / Bianco Sardo
Wall Panels	MDF VT_014
Entrance Sides	Stainless Steel / Satine
Mirror Panels	Stainless Steel / Satine
Mirror	Float Mirror / Standard
Ceiling	Stainless Steel / Mirror
Lightning	LED
Handrail	Staine Stainless Steel
Kickplate	Stainless Steel / Mirror
COP	Car Operation Panel not included.



Ultra Wood 02



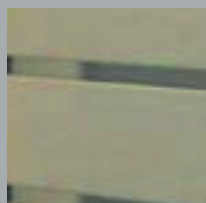
Floor	Granite / Star Galaxy
Wall Panels	MDF VT_194
Entrance Sides	Stainless Steel / Satine
Mirror Panels	Stainless Steel / Satine
Mirror	Float Mirror / Standard
Ceiling	Stainless Steel / Mirror
Lightning	LED
Handrail	Staine Stainless Steel
Kickplate	Stainless Steel / Mirror
COP	Car Operation Panel not included.



Ultra Wood 03



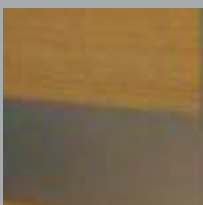
Floor	Granite / Bianco Sardo
Wall Panels	MDF VT_207
Entrance Sides	Stainless Steel / Satine
Mirror Panels	Stainless Steel / Satine
Mirror	Flotal Mirror / Standard
Ceiling	Stainless Steel / Mirror
Lightning	LED
Handrail	Staine Stainless Steel
Kickplate	Stainless Steel / Mirror
COP	Car Operation Panel not included.



Ultra Wood 04



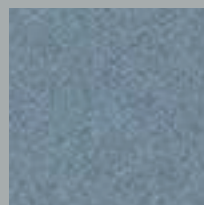
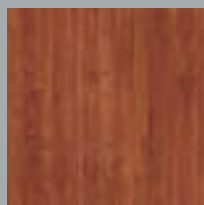
Floor	Granite / Star Galaxy
Wall Panels	MDF VT_975
Entrance Sides	Stainless Steel / Satine
Mirror Panels	Stainless Steel / Satine
Mirror	Flotal Mirror / Standard
Ceiling	Stainless Steel / Mirror
Lightning	LED
Handrail	Staine Stainless Steel
Kickplate	Stainless Steel / Mirror
COP	Car Operation Panel not included.



Ultra Wood 05



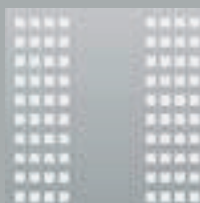
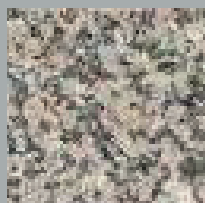
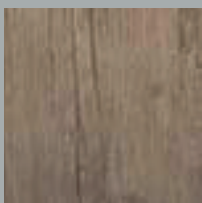
Floor	Granite / Bianco Sardo
Wall Panels	MDF VT_021
Entrance Sides	Stainless Steel / Satine
Mirror Panels	Stainless Steel / Satine
Mirror	Flotal Mirror / Standard
Ceiling	Stainless Steel / Mirror
Lightning	LED
Handrail	Staine Stainless Steel
Kickplate	Stainless Steel / Mirror
COP	Car Operation Panel not included.



Ultra Wood 06



Floor	Granite / Star Galaxy
Wall Panels	MDF VT_351
Entrance Sides	Stainless Steel / Satine
Mirror Panels	Stainless Steel / Satine
Mirror	Flotal Mirror / Standard
Ceiling	Stainless Steel / Mirror
Lightning	LED
Handrail	Staine Stainless Steel
Kickplate	Stainless Steel / Mirror
COP	Car Operation Panel not included.

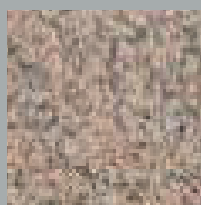
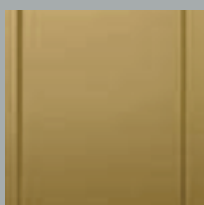


Panoramic Gold

36



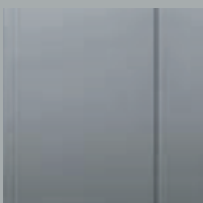
Floor	Granite / Rosa Porino
Wall Panels	Lameks Glass
Entrance Sides	Stainless Steel / Satine Gold
Ceiling	Stainless Steel / Mirror
Lightning	LED
Handrail	Staine Stainless Steel Gold
Kickplate	Stainless Steel / Gold Mirror
COP	Car Operation Panel not included.



Panoramic Silver



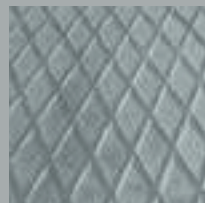
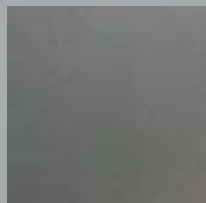
Floor	Granite / Rosa Porino
Wall Panels	Lameks Glass
Entrance Sides	Stainless Steel / Satine
Ceiling	Stainless Steel / Mirror
Lightning	LED
Handrail	Satine Stainless Steel
Kickplate	Stainless Steel / Mirror
COP	Car Operation Panel not included.



Hospital Type Cabin



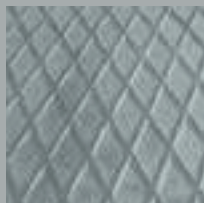
Floor	Aluminum Sheet
Wall Panels	Stainless Steel / Satine
Entrance Sides	Stainless Steel / Satine
Technical Details	Firefighter Ladder and Rescue Hatch
Ceiling	Stainless Steel / Mirror
Lightning	LED
Handrail	Staine Stainless Steel
Kickplate	Stainless Steel / Mirror
COP	Car Operation Panel not included.

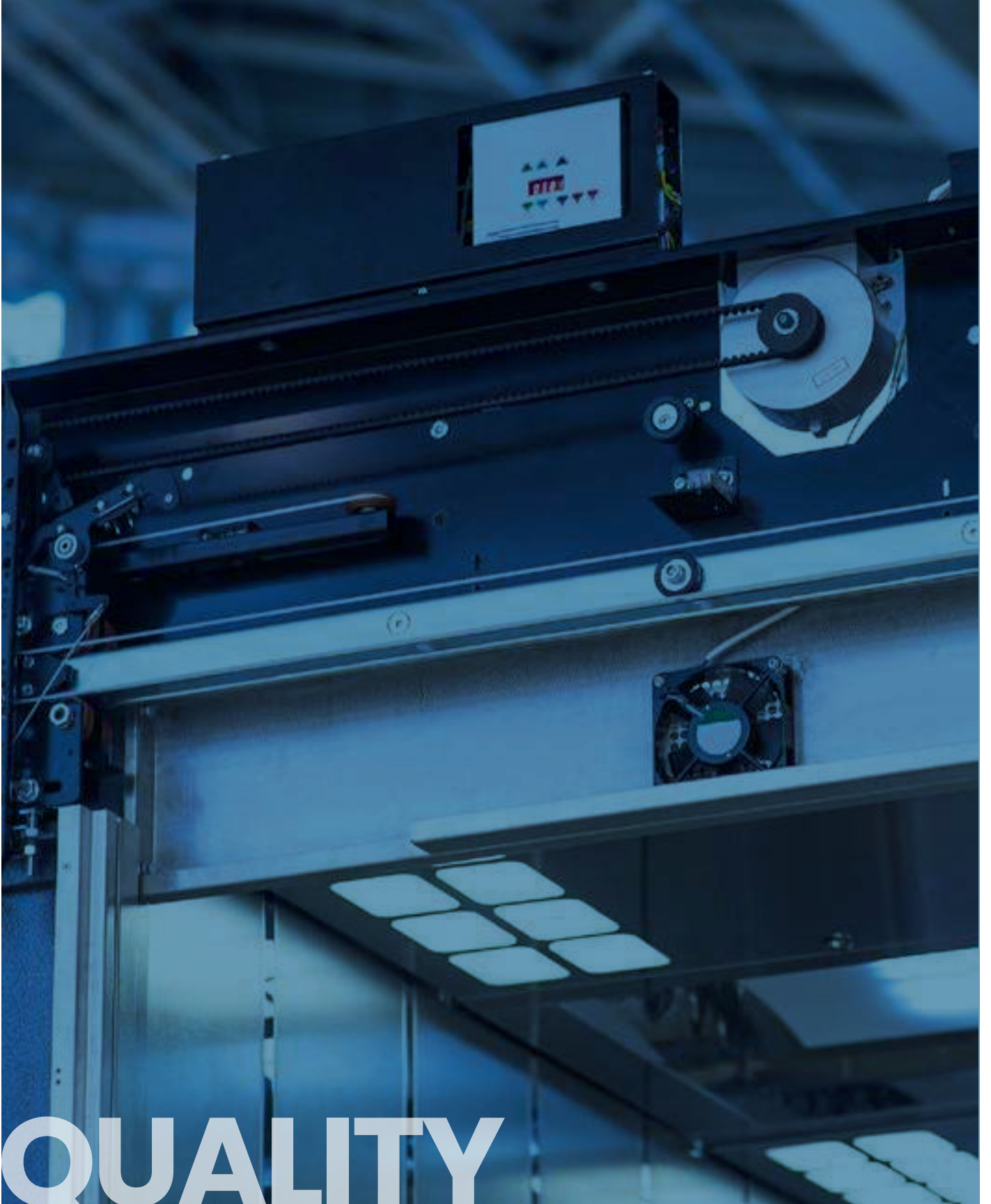


Goods Type Cabin



Floor	Aluminum Sheet
Wall Panels	RAL 7035
Entrance Sides	RAL 7035
Mirror Panels	Stainless Steel / Satine
Ceiling	Stainless Steel / Mirror
Lightning	LED
Handrail	Satine Stainless Steel
Kickplate	Stainless Steel / Mirror
COP	Cabin Operation Panel not included.





QUALITY

WALL PANEL OPTIONS

RAL Options



RAL 1013



RAL 1015



RAL 3020



RAL 4001



RAL 5012



RAL 5018



RAL 6019



RAL 7032



RAL 1023



RAL 6034



RAL 5024



RAL 3017



RAL 9006



RAL 7035



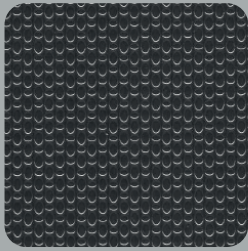
RAL 7034



RAL 5009

WALL PANEL OPTIONS

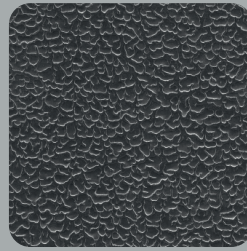
Stainless Steel Options



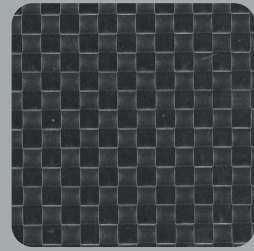
P01
Dot Pattern



P02
Stony Pattern



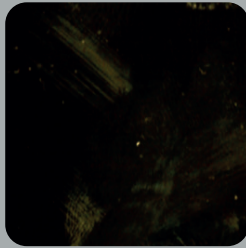
P03
Leather Pattern



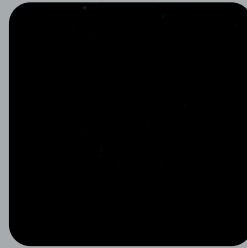
P04
Square Pattern



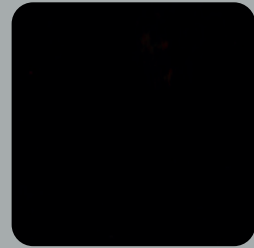
DM-01



DG-01



DB-01



DR-01



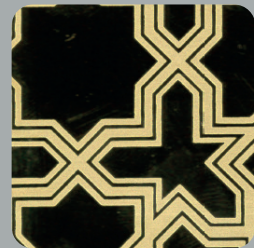
DC-01



DM-02



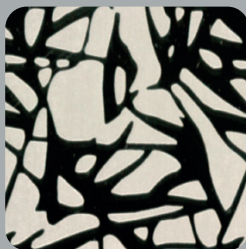
DG-02



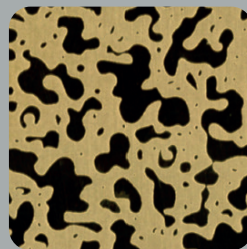
DG-03



DM-03



DM-04



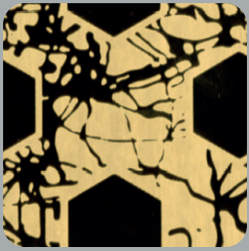
DG-05



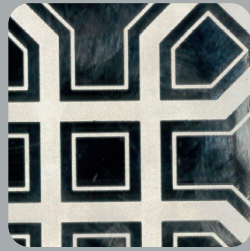
DM-05

WALL PANEL OPTIONS

Stainless Steel Options



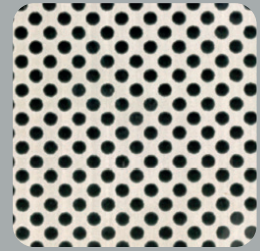
DG-06



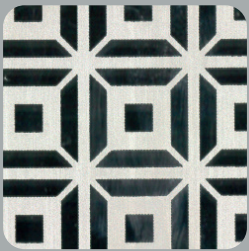
DM-07



DM-08



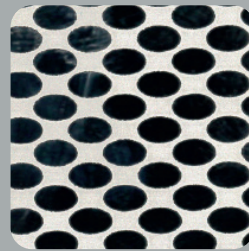
DM-09



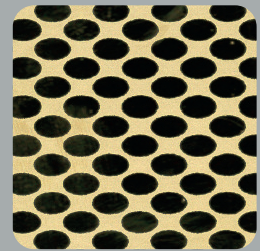
DM-10



DG-10



DM-11



DG-11



DM-13



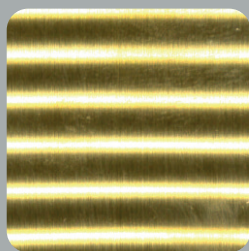
DM-15



DM-17



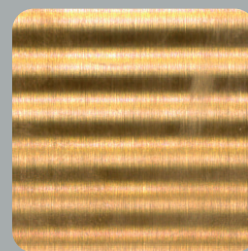
MZK



DGT



DBT



DRT

WALL PANEL OPTIONS

Lamine Options



L-01



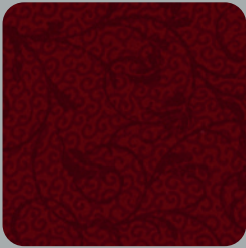
L-02



L-03



L-04



L-05

WALL PANEL OPTIONS

Marble Options



MR-13



MR-21



MR-24



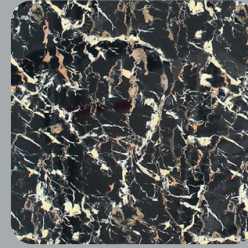
MR-28



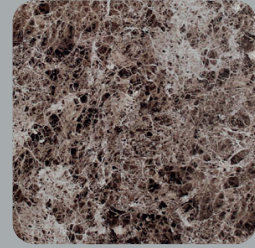
MR-38



MR-45



MR-53



MR-57

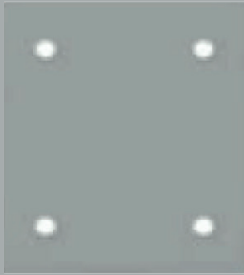


MR-66



MR-79

CEILING OPTIONS



UYG-LED01



UYG-LED02



UYG-LED03



UYG-LED04



UYG-LED05



UYG-LED06



UYG-LED07



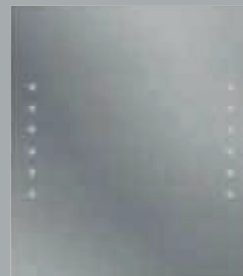
UYG-LED08



UYG-LED09



UYG-LED10



UYG-LED11



UYG-LED12

CEILING OPTIONS



UYG-LZ01



UYG-LZ02



UYG-LZ03



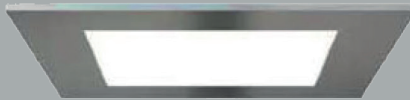
UYG-LZ04



UYG-LZ05



UYG-LZ06



UYG-LZ07



UYG-LZ08



UYG-LZ09



UYG-LZ10



UYG-LZ11



UYG-LZ12



UYG-LZ13



UYG-LZ14



UYG-LZ15



UYG-LZ16

FLOOR OPTIONS

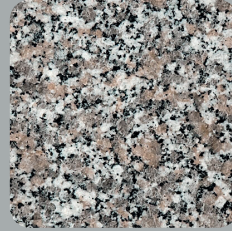
Granite



FG-01



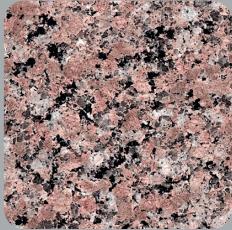
FG-02



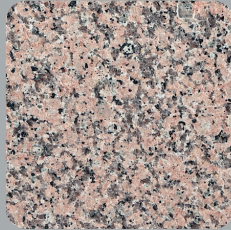
FG-03



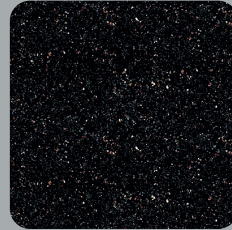
FG-04



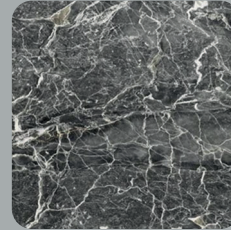
FG-05



FG-06



FG-07

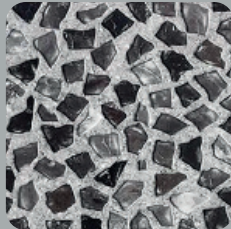


FG-08

PVC



A-516



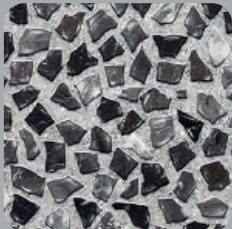
3714



1341-6



RG-84



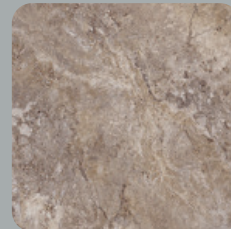
TU-62



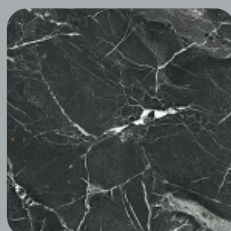
SY-192



ST-12



AV-82



AV-45

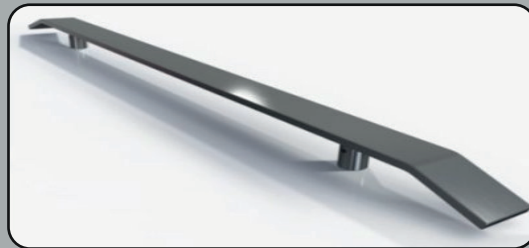


ES-5

HANDRAIL OPTIONS



Round Twist



Brooch Twist



Black Satin
Stainless



Gold Satin
Stainless



Copper Satin
Stainless



Satin
Stainless

LOP / COP OPTIONS

Surface Models

PG Series

LP Series



PGN1000 SM
1100x200 mm

PGN1000 SM D64
1100x230 mm

PGN1000 SM DM
1100x200 mm

LGPN1000 SM
1000x200 mm

LGPN2000 SM
2000x230 mm

LOP / COP OPTIONS

Flush Models

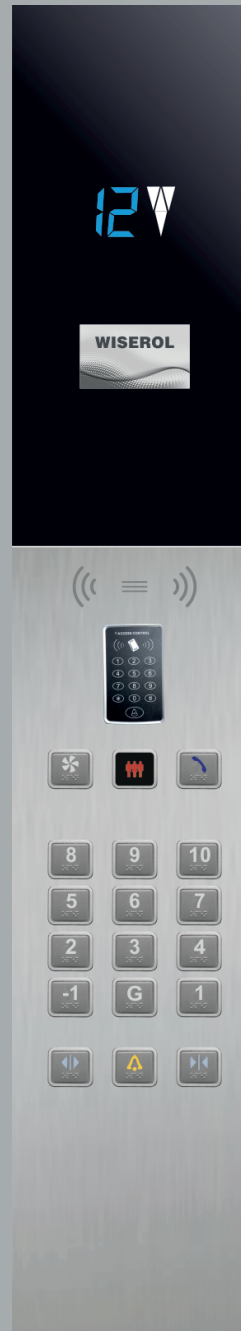
SG Series



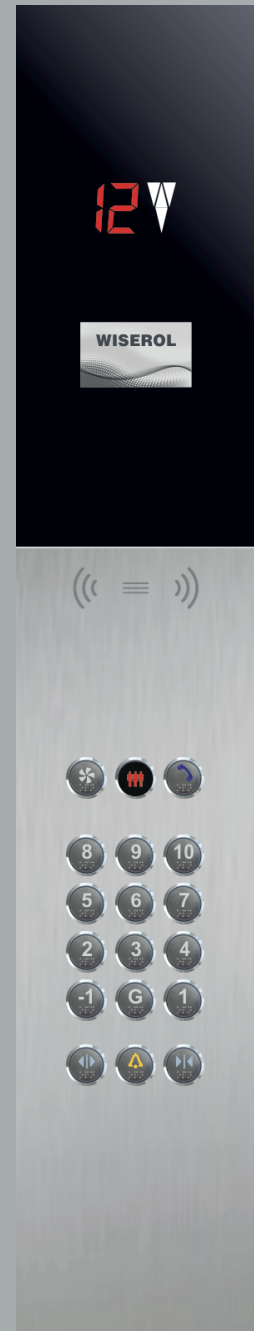
SGGN1000 SM
1100x200x24 mm



SGN1000 SM
1100x200x24 mm



SGN2000 RFID
2000x280 mm



SGN2000
2000x280 mm

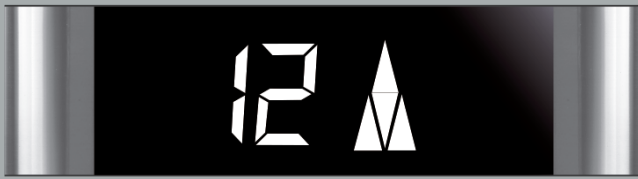
LOP / COP OPTIONS

Surface Models

PG Series



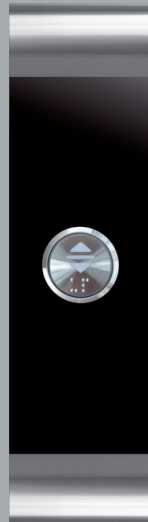
PGI280 DM
250x40x15 mm



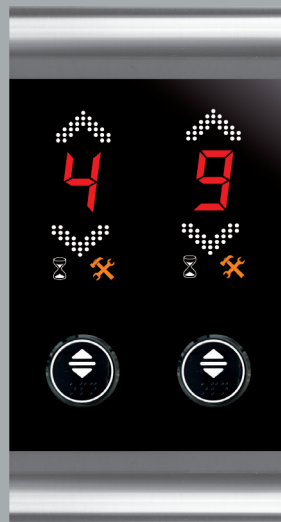
PGI280
250x40x15 mm



PGTB282
280x76 mm



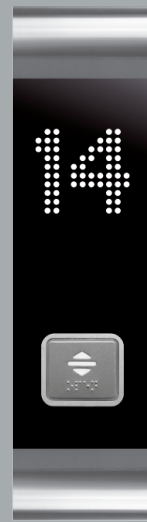
PGTB281
280x76 mm



PGT2822
280x150 mm



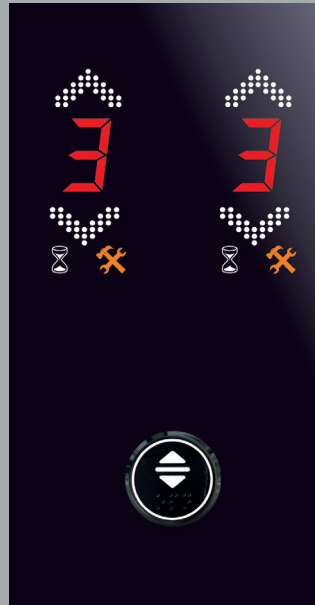
PGT281
280x76 mm



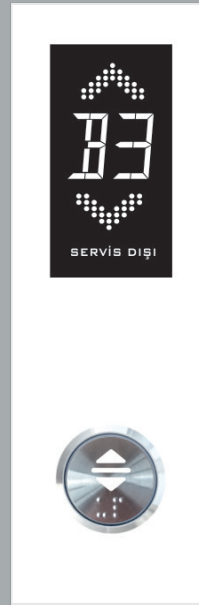
PGT281 DM
280x76 mm

LOP / COP OPTIONS

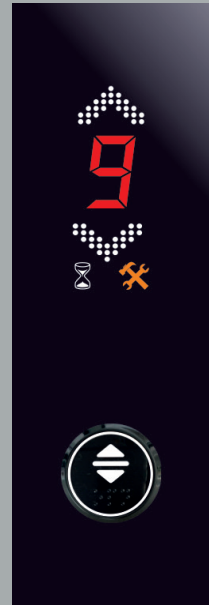
Flush Models



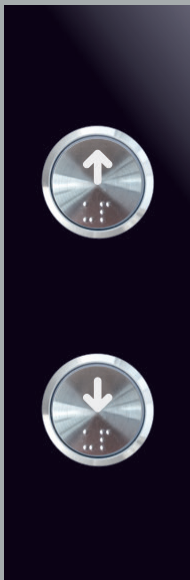
GST321
300x155 mm



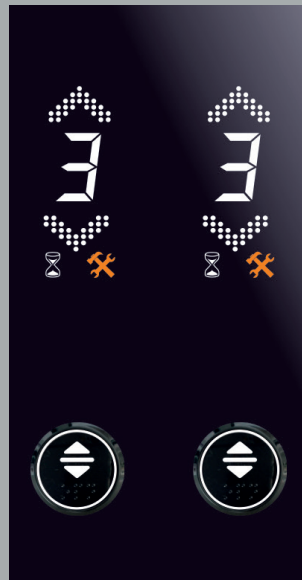
GST301 - LCD
300x94 mm



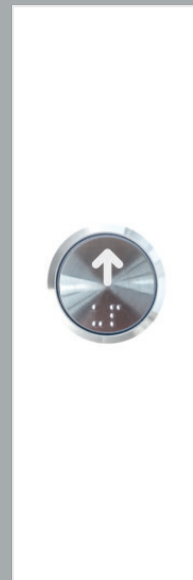
GST301
300x94 mm



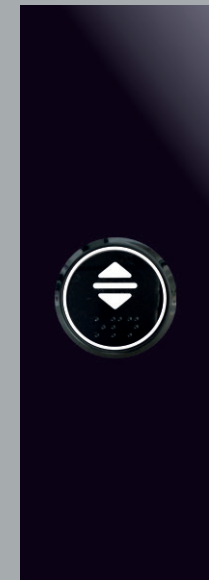
GSTB252
250x100 mm



GST322
300x155 mm



GSTB251
250x100 mm



GSTB251
250x100 mm

OPTIONS



D64



SWST



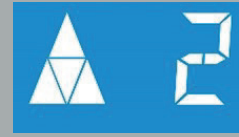
WST



TYPE 1



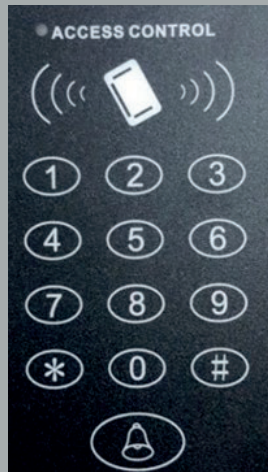
TYPE 2



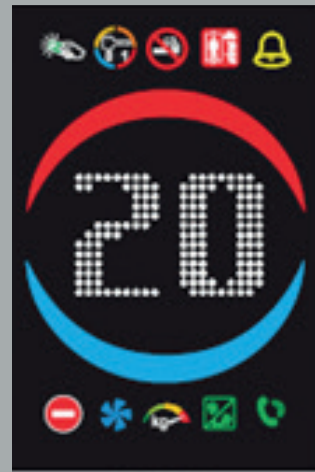
TYPE 3



TYPE 6



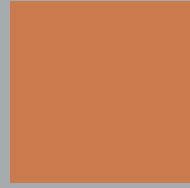
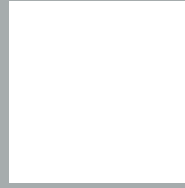
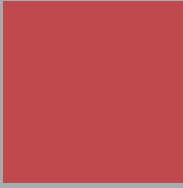
RFID



S 60

OPTIONS

DOMATRIX & DISPLAY COLORS



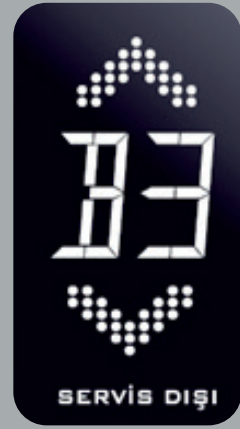
DISPLAY



G1



G2



G3



B1



B2



B3

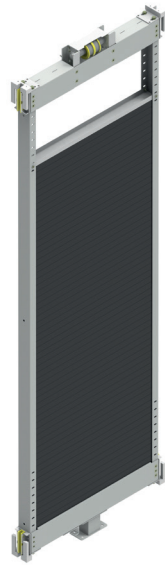
SLING SYSTEMS

COUNTERWEIGHT SLING SYSTEMS

UYGAR



CWS 1:1 ROPE



CWS 2:1 BELT SLIM



CWS 2:1 BELT



CWS 2:1 ROPE



CWS 2:1 ROPE HEAVYDUTY

COUNTERWEIGHT SLING EMPTY WEIGHT

DBG	H:3000	H:3500	H:4000
mm	kg	kg	kg
600	70	76	82
640	73	79	85
700	74	80	86
800	77	83	89
900	80	86	92
1000	83	89	95
1200	182	194	206
1280	191	203	215
1400	198	210	222
1600	206	218	230
1800	214	226	238
2000	222	234	246

S

2S

H: Height of counterweight sling

*weight of pulley = 25-50 kg

USABLE MAX. WEIGHT PIECES (DD)

DBG	Weight	Pc	H:3000mm	H:3500mm	H:4000mm
mm	mm	kg	pc	pc	pc
600	560x200x91	35	28	34	39
640	600x200x85	35	30	36	42
700	660x200x78	35	33	39	45
800	760x200x68	35	38	45	52
900	860x200x59	35	43	52	60
1000	960x200x53	35	48	58	67
1200	560x200x91	35	56	68	78
1400	660x200x78	35	66	78	90
1600	760x200x68	35	76	90	104
1800	860x200x59	35	86	104	120
2000	960x200x53	35	96	116	134

USABLE MAX. WEIGHT PIECES (RDD)

DBG	Weight	Pc	H:3000mm	H:3500mm	H:4000mm
mm	mm	kg	pc	pc	pc
600	560x150x110	30	23	28	32
640	600x150x97	30	26	31	36
700	660x150x88	30	29	35	40
800	760x150x76	30	34	40	47
900	860x150x66	30	39	47	54
1000	960x150x60	30	43	51	59
1200	560x150x110	30	46	56	64
1400	660x150x88	30	58	70	80
1600	760x150x76	30	68	82	94
1800	860x150x66	30	78	94	108
2000	960x150x60	30	86	102	108

S

2S

H: Height of counterweight sling

GENERAL FEATURES OF L TYPE CAR SLING

- Accordance with 95/16 elevator regulations and standard of EN 81/ 20-50
- Appropriate choices with rated load for 320 kg-2500 kg
- Modular design for easy installation.
- Can be installed in approximately 30 minutes.
- Easy transport and storage
- Weights are in the range of 600-960 mm
- Their densities are between 3,6 - 4 gr/cm³
- Does not oxidize
- Pressure resistance is high

MODULAR COUNTERWEIGHT SLING SYSTEMS



H TYPE
CSH 2:1 BELT OR ROPE
STANDART TYPE



H TYPE
CSH 2:1 ROPE
HEAVY DUTY TYPE

H TYPE CAR SLING WEIGHT

BG mm	2:1ROPE kg	2:1BELT kg	1:1ROPE kg
1130	260	250	193
1230	270	260	197
1480	282	272	206
1530	285	275	208

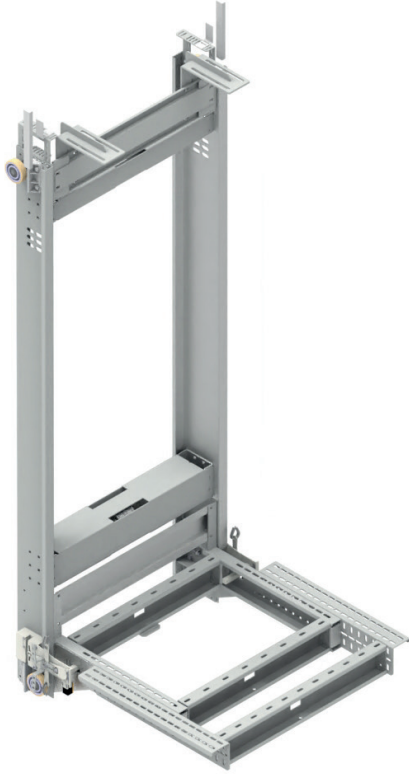
B.G: Car between guide rails

GENERAL FEATURES OF H TYPE CAR SLING

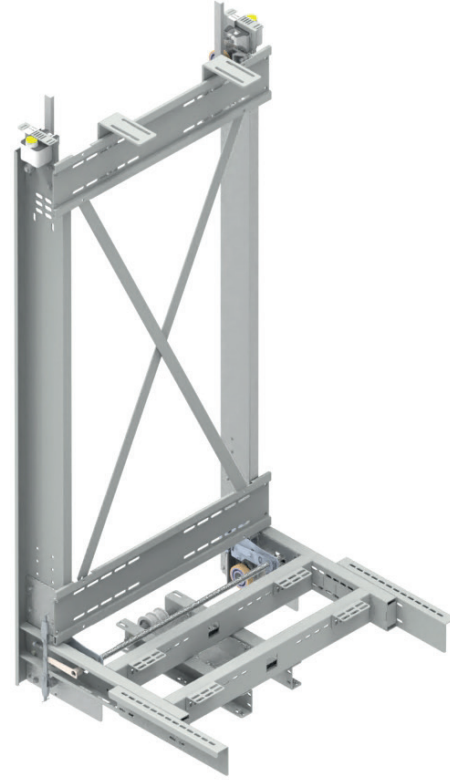
- Accordance with 95/16 elevator regulations and standard of EN 81/ 20-50
- Appropriate choices with rated load for 320 kg-2500 kg
- Modular design for easy installation
- Connection to the specified position and reduced the number of bolts
- Can be installed in approximately 30 minutes
- Easy transport and storage
- Excessive load system with mechanical adjustment
- Braking system that dual direction sliding effect
- Vmax: 2.5 m/s
- P+Q: 5000 kg (16 mm.)

DESIGN

MODULAR CAR SLING SYSTEMS



L TYPE
CSH 2:1 BELT



C TYPE
CSC 2:1 BELT

L TYPE CAR SLING WEIGHT

BG mm	H:2500 kg	H:2600 kg	H:2700 kg
605	144	146	148
645	150	152	154
705	156	158	160
805	162	164	166
905	168	170	172
1005	174	176	178

C TYPE CAR SLING WEIGHT

BG mm	H:2500 mm	H:2600 kg	H:2700 kg
964	144	146	148
1014	150	152	154
1064	156	158	160
1164	162	164	166
1264	168	170	172
1364	174	176	178

GENERAL FEATURES OF L TYPE CAR SLING

- Accordance with 95/16 elevator regulations and standard of EN 81/ 20-50
- Appropriate choices with rated load for 320 kg-1000 kg
- Modular design for easy installation
- Connection to the specified position and reduced the number of bolts
- Can be installed in approximately 30 minutes
- Easy transport and storage
- Braking system that dual direction sliding effect
- Vmax: 1.0 m/s
- P+Q (max): 3500 kg (16 mm.)

GENERAL FEATURES OF C TYPE CAR SLING

- Accordance with 95/16 elevator regulations and standard of EN 81/ 20-50
- Appropriate choices with rated load for 320 kg-1250 kg
- Modular design for easy installation
- Connection to the specified position and reduced the number of bolts
- Can be installed in approximately 30 minutes.
- Easy transport and storage
- Braking system that dual direction sliding effect
- Vmax: 1.0 m/s
- P+Q (max): 3500 kg (16 mm.)





Countries We Export



Uygar with,

18000 m² production capacity is serving in domestic and overseas as already exporting to 3 continents more than 20 countries.



Certificates



<https://www.uygar.com.tr/tum-sertifikalar/>

If you want to see our certificates in document format, you can enter the following link or you can read the QR code on your smart phone by reading it.

Product Conformity Certificates

MR and MRL System

EU Type Examination Certificate For Lift
(Module B)

Landing Door Locking Device

S50 Model

EU Type Examination Certificate

Landing Door Locking Device

S50 Model

EU Certificate of Conformity to Type
with Radom Cheking (Module C2)

Car Door Locking Device

S50 Model

Certificate of Conformity to Type

Landing Door and Car Door Pendulum Test Certificate

S50 Model

Type examination certificate
by Linfinstituut

Fire Resistance Certificates

Landing Door

2P Teleskopik E1120, E120, EW60

3P Teleskopik E120

4P Center E120

Management System Certificates

Certificate of Quality

Management System

ISO 9001: 2015

Trademark Registration Certificate

UYGAR[®]





UYGAR[®]

ELEVATOR

since
**19
76**

UYGAR[®]

ELEVATOR

+90 (312) 385 39 57

info@uygar.com.tr

www.uygar.com.tr

Alcı OSB Mahallesi,

2020. Cadde, No: 11

06930 SİNCAN/ANKARA/TÜRKİYE