

T R U S T   T O   M O T I O N

since  
**1976**

**UYGAR<sup>®</sup>**  
ELEVATOR

# S50

ELEVATOR  
DOOR SYSTEMS







**UYGAR**<sup>®</sup>





We produce our products  
with quality and confidence with  
superior service understanding.  
**We continue to sign the sector's firsts  
with our giant investment.**

T R U S T T O M O T I O N



# S50 ELEVATOR DOOR SYSTEM

Automatic landing and car doors  
designed for use in residential and general  
purpose elevators in accordance with  
ISO 4190 Class 1 definitions.



## easy & quick

- All parts are packed according to the assembly order. Assembling accessories are separately packaged.
- Self referencing combinations are used for easy and error-free assembly. The pre-assembled threshold group is one of them too.
- Landing and car mechanisms are tested firstly and then according to the results they are delivered.
- A single type of panel design is used that make it impossible to make mistakes.
- The minimum setting has required.
- The landing doors are ready in one hour from opening the package until the setting completed. Again in the same way the car doors are ready in 1,5 hours.



## delivery in time

- The delivery time of S50 model doors in terms of ex-works (factory delivery) standard and RAL 7035 is 4 weeks following order confirmations.



## practical maintenance

- Reduced part number, common parts and details on landing and car doors, the highest anvironmental conditions galvanized coating that provides strength. In addition, there is a VVVF door driver system.



## durable & reliable

Uygar landing doors has the feature of opening and closing 1 million cycles and Uygar car doors has 2 million cycles.



## fire resistance

All S50 landing doors have EN 81-58 E120 and E120-EW60 fire resistance certificate.



## optimize packing

The volume, weight and floor space of the S50 model doors are reduced. They are packed in a single box with flat and recyclable properties.



## modular design

Compact design, the top point of the car door with clear entry height +350 mm and the top point of the landing door with clear entry height +210 mm.

Modular solution provided with a set threshold depth for all S50 doors.



## low voice

Sound level below 50 db with new rail design and new roller material, The interior design, silenced by an aluminum cradle, has a rail design that is reinforced with steel to make it more rigid.



## Resistance to **Environmental Conditions**

Production conforming to international standards and all working environment conditions with our latest automation powder paint machine.





---

from R&D process until the  
after-production services,  
our priority is always

**your satisfaction.**

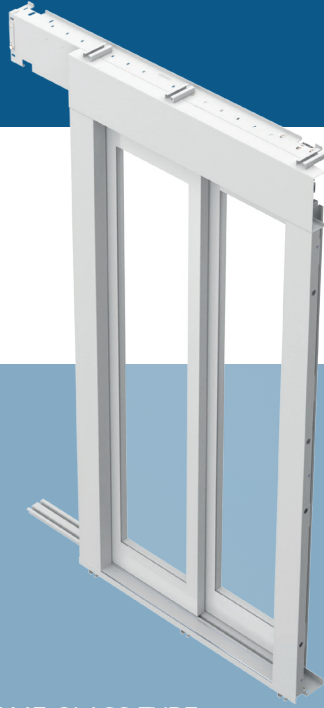
---



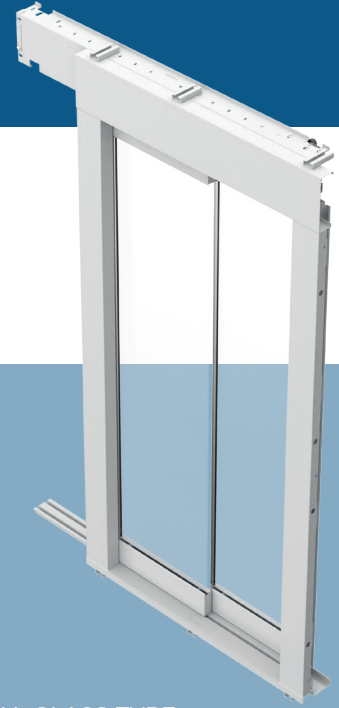
# S50 Model 2P



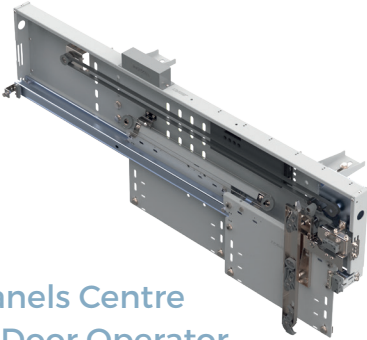
STANDARD TYPE



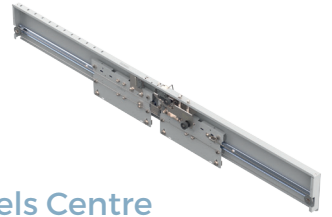
FRAME GLASS TYPE



FULL GLASS TYPE



2 Panels Centre  
Car Door Operator



2 Panels Centre  
Landing Door Mechanism

|                       | Technical Properties      |
|-----------------------|---------------------------|
| Clear Opening (mm)    | 600-1400                  |
| Clear Height (mm)     | 1700-2300                 |
| EN 81-20/50           | ✓                         |
| EN81-71               | ×                         |
| EN81-72               | ×                         |
| EN 81-58 - E120       | ✓                         |
| EN81-58 - E120 - EW60 | ×                         |
| Aluminum Sill         | ✓                         |
| Reinforced Sill       | ×                         |
| Front Sill            | ✓                         |
| Door Closing          | Spring                    |
| Light Curtain         | Constant                  |
| Door Card and Motor   | KM30S 200W - PM105W Motor |

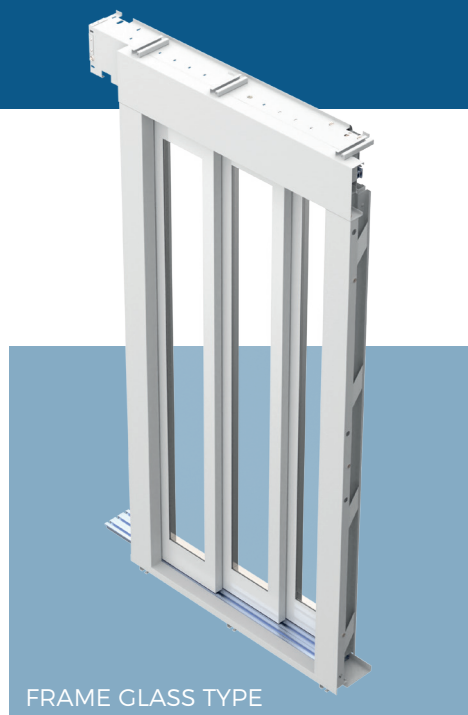
\*There may be changes in the certificate depending on the product type.



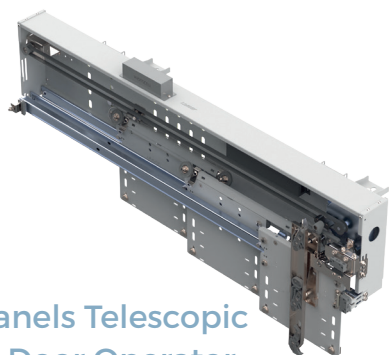
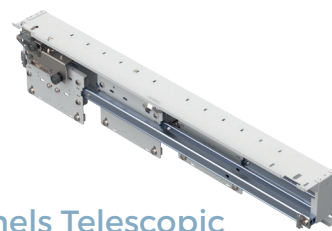
# S50 Model 3P



STANDARD TYPE



FRAME GLASS TYPE

3 Panels Telescopic  
Car Door Operator3 Panels Telescopic  
Landing Door Mechanism

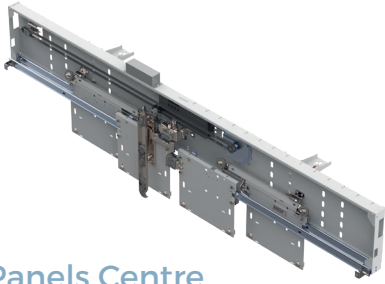
|                       | Technical Properties      |
|-----------------------|---------------------------|
| Clear Opening (mm)    | 600-1400                  |
| Clear Height (mm)     | 1700-2300                 |
| EN 81-20/50           | ✓                         |
| EN81-71               | ×                         |
| EN81-72               | ×                         |
| EN 81-58 - E120       | ✓                         |
| EN81-58 - E120 - EW60 | ×                         |
| Aluminum Sill         | ✓                         |
| Reinforced Sill       | ×                         |
| Front Sill            | ✓                         |
| Door Closing          | Spring                    |
| Light Curtain         | Constant                  |
| Door Card and Motor   | KM30S 200W - PM105W Motor |

\*There may be changes in the certificate depending on the product type.

- ✓ Standart  
× Optional



# S50 Model 4P



|                       | Technical Properties      |
|-----------------------|---------------------------|
| Clear Opening (mm)    | 600-1400                  |
| Clear Height (mm)     | 1700-2300                 |
| EN 81-20/50           | ✓                         |
| EN81-71               | ×                         |
| EN81-72               | ×                         |
| EN 81-58 - E120       | ✓                         |
| EN81-58 - E120 - EW60 | ×                         |
| Aluminum Sill         | ✓                         |
| Reinforced Sill       | ×                         |
| Front Sill            | ✓                         |
| Door Closing          | Spring                    |
| Light Curtain         | Constant                  |
| Door Card and Motor   | KM30S 200W - PM105W Motor |

\*There may be changes in the certificate depending on the product type.



# Standard Delivery Scope



standard model

## ✓ Landing door mechanism

- ✓ Frame
- ✓ Panels
- ✓ Aluminum sill and bolt
- ✓ Sill sub-profile
- ✓ Door skirt-plate and bolt
- ✓ Hanger-plate kit
- ✓ Panel plastic skate kit
- ✓ Connection Brackets (Type 1)
- ✓ User manual
- ✗ Metal Sill-Reinforced
- ✓ Fire Resistance EN 81-58 / E120

## ✓ Car door operator

- ✓ Skate (400 mm)
- ✗ Emergency opening rope
- ✗ Skate EN 81-20/50 (400mm)
- ✓ Panels
- ✓ Panel hanger bolt kit
- ✓ Panel plastic skate kit
- ✓ Aluminum sill
- ✗ Door skirt plate
- ✓ Connection brackets-Top
- ✓ User manual
- ✗ Metal sill-Reinforced
- ✗ Weco light curtain
- ✗ Weco installation Kit

✓ Standard

✗ Optional



full and framed glass

## ✓ Landing door mechanism

- ✓ Frame
- ✓ Panels
- ✓ Aluminum sill and bolt
- ✓ Sill sub-profile
- ✓ Door skirt-plate and bolt
- ✓ Hanger-plate kit
- ✓ Panel plastic skate kit
- ✓ Connection Brackets (Type 1)
- ✓ User manual
- ✗ Metal Sill-Reinforced

## ✓ Car door operator

- ✓ Skate (400 mm)
- ✗ Emergency opening rope
- ✗ Skate EN 81-20/50 (400mm)
- ✓ Panels
- ✓ Panel hanger bolt kit
- ✓ Panel plastic skate kit
- ✓ Aluminum sill
- ✗ Door skirt plate
- ✓ Connection brackets-Top
- ✓ User manual
- ✗ Metal sill-Reinforced
- ✗ Weco light curtain
- ✗ Weco installation Kit

✓ Standard

✗ Optional



# Design Options

## Electrostatic Paint Options



RAL 1003



RAL 3003



RAL 3022



RAL 4001



RAL 5010



RAL 5018



RAL 6005



RAL 6011



RAL 7016



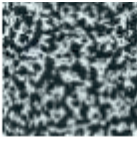
RAL 7035



RAL 8015



RAL 9002



197



414



877



943



1390

## Satine Stainless Steel Options

Brushed  
Stainless  
Steel



SB  
Stainless  
Steel



Karo  
Stainless  
Steel



Linen  
Stainless  
Steel



Leather  
Stainless  
Steel



Gold  
Stainless  
Steel



Mirros  
Stainless  
Steel



# Countries we export

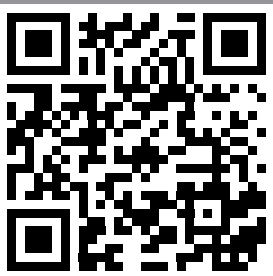


**Uygar with,**  
18000 m<sup>2</sup> production capacity is  
serving in domestic and  
overseas as already exporting to  
3 continents more than 20  
countries.





# Certificates



If you want to see our certificates in document format, you can enter the following link or you can read the QR code on your smart phone by reading it.

<https://www.uygar.com.tr/tum-sertifikalar/>



## **Product Conformity Certificates**

### **MR and MRL System**

**EU Type Examination Certificate For Lift (Module B)**

### **Landing Door Locking Device**

S50 Model

**EU Type Examination Certificate**

### **Landing Door Locking Device**

S50 Model

**EU Certificate of Conformity to Type with Radom Cheking (Module C2)**

### **Car Door Locking Device**

S50 Model

**Certificate of Conformity to Type**

### **Landing Door and Car Door Pendulum Test Certificate**

S50 Model

**Type examination certificate  
by Linfinstituut**

## **Fire Resistance Certificates**

### **Landing Door**

2P Teleskopik EI120 , E120, EW60

3P Teleskopik E120

4P Center E120

## **Management System Certificates**

### **Certificate of Quality**

**Menagement System**

ISO 9001: 2015

Trademark Registration Certificate

w w w . u y g a r . c o m . t r

since  
**1976**

**UYGAR®**

ELEVATOR

Alcı OSB Mah.

2020. Cad. No: 11

Sincan/Ankara 06930

T: +90 312 385 39 57

[info@uygar.com.tr](mailto:info@uygar.com.tr)

Released in 2023

T R U S T T O M O T I O N